

# Spelling Shed

Stage: 1

List: 1

Words ending with the /f/, /l/, /s/, /z/ or /k/ sound in English almost always have double consonant.



Stage: 1	Words ending with the /f/, /l/, /s/, /z/ or /k/ sound in English almost always have double consonant.
List: 1	

Spellings
puff
fluff
bell
doll
grass
kiss
buzz
fizz
clock
back

Introduction	Words ending with the /f/, /l/, /s/, /z/ or /k/ sound in English almost always have double consonant. This week's words are shown in random order. Sound the words out and count the sounds. Ask the children if they can see a pattern with the last sound. Discuss that the /k/ sound is usually written as "ck".
Main Teaching Activity	Read the sentence for each word and ask children for the word and spelling to reinforce the double-consonant rule.
Independent Activity	Ask the children to choose one of their words to complete the two sentences. Then ask them to choose three more words and write their own sentences. Work in pairs or with support if necessary. Share sentences and spellings with the class.

Stage: 1	Words ending with the /f/, /l/, /s/, /z/ or /k/ sound in English almost always have double consonant.
List: 1	
Name:	



Spelling Shed

puff

doll

clock

back

grass

kiss

fluff

bell

buzz

fizz



Spelling Shed

A \_\_\_\_\_ of smoke came from the train.



Answer:

A puff of smoke came from the train.







Spelling Shed

The kitten was covered in \_\_\_\_\_.



Answer:

The kitten was covered in **\_fluff\_**.





Spelling Shed



The teacher rang the \_\_\_\_\_.





Answer:



The teacher rang the **\_bell\_**.





Spelling Shed

The \_\_\_\_\_ has a blue dress.



Answer:

The **\_doll\_** has a blue dress.

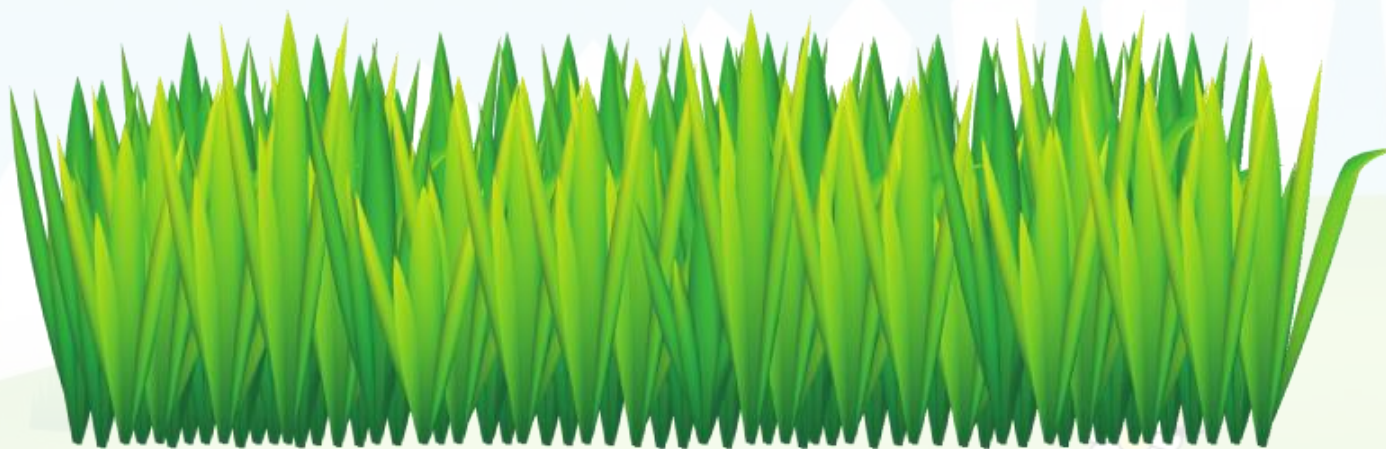




Spelling Shed



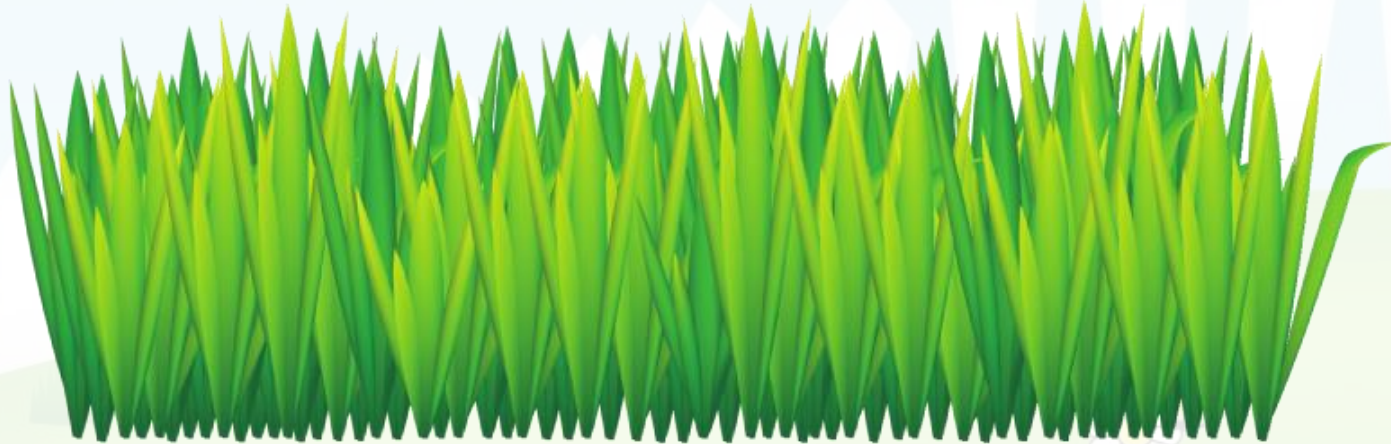
The \_\_\_\_\_ on the field is green.



Answer:



The **\_grass\_** on the field is green.







Spelling Shed

The mermaid blew a \_\_\_\_\_.





Answer:

The mermaid blew a **\_kiss\_**.

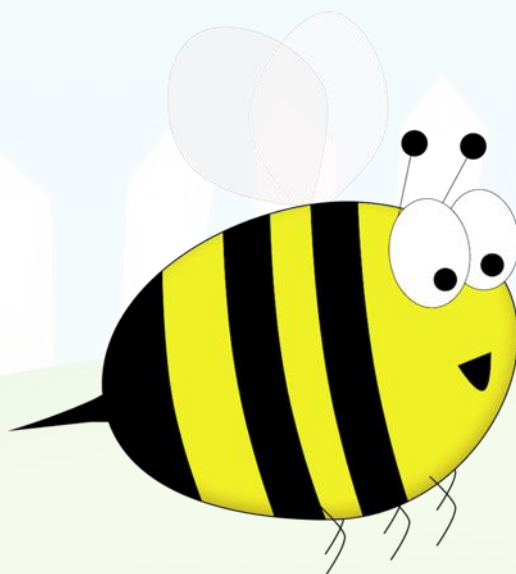




Spelling Shed



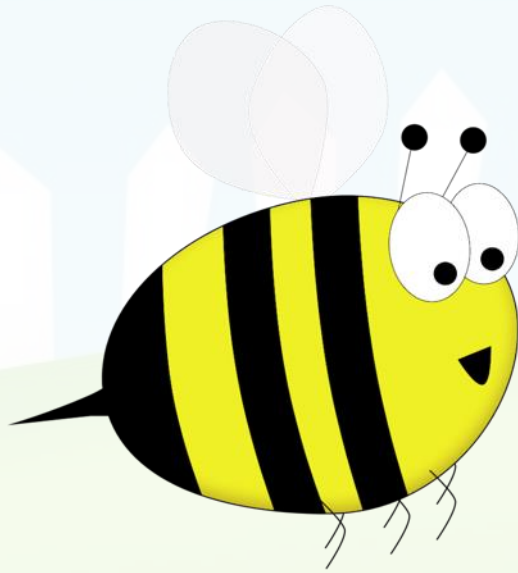
Bumble's wings \_\_\_\_\_.



Answer:



Bumble's wings **\_buzz\_**.





Spelling Shed



The can was full of \_\_\_\_\_.



Answer:



The can was full of **\_fizz\_**.







Spelling Shed

You tell the time by  
using a \_\_\_\_\_.





Answer:



You tell the time by  
using a **\_clock\_**.





Spelling Shed

The girl's hair ran down her

\_\_\_\_\_.



Answer:



The girl's hair ran down her  
\_back\_.





Spelling Shed

Stage: 1

Words ending with the /f/, /l/, /s/, /z/ or /k/ sound in English almost always have double consonant.

List: 1

## Spellings

puff

fluff

bell

doll

grass

kiss

buzz

fizz

clock

back

Chose one of your words to complete the two sentences. Try to write three sentences of your own.

Your word

Your sentence

The clouds looked like balls of \_\_\_\_\_ in the sky.

“Can you hear the church \_\_\_\_\_?” asked mum.



Spelling Shed

Stage: 1

Words ending with the /f/, /l/, /s/, /z/ or /k/ sound in English almost always have double consonant.

List: 1

Answers

## Spellings

puff

fluff

bell

doll

grass

kiss

buzz

fizz

clock

back

Chose one of your words to complete the two sentences. Try to write three sentences of your own.

Your word

Your sentence

The clouds looked like balls of fluff in the sky.

"Can you hear the church bell?" asked mum.