



# Newsletter 16

## 15th May 2026

### Headteacher Message

As we move further into the summer term, it has been wonderful to finally see the weather improving, with the brighter mornings and warmer afternoons bringing a renewed energy to our playground and classrooms. This term is always a busy time in school with the feasts of Ascension and Pentecost, residentials, sporting events and preparation for transitions. This year, as you know, we have had the added busyness of recruitment. I'm delighted to let you know that Mrs Coates has taken on the role of School Business Manager and we have appointed Mr Sheridan as our new Facilities Manager. Mr Sheridan will start with us on Friday 22nd May.

We hope you find time to enjoy the sunshine and these moments of reflection with your families over the coming weeks. Enjoy half term when it arrives!

With my very best wishes,

Kate Massey





### Did you know ...?

#### WORKING TOGETHER TO IMPROVE SCHOOL ATTENDANCE

- Good attendance at school is essential for children to get the most out of their school experience, including their attainment, wellbeing and wider life chances.
  - Nurseries and first schools play a vital role in embedding good attendance habits.
  - Even at first school, children with the highest attendance have higher rates of attainment.
  - National data shows us that children not meeting the expected standard in reading, writing and maths.
  - For the most vulnerable pupils, regular attendance is also an important protective factor and the best opportunity for children's needs to be identified and support provided. Research has shown there are clear links between regular absence from school and harm to children.
- 95% attendance = two weeks absence
  - 90% attendance = 4 weeks absence
  - 85% attendance = 6 weeks absence
  - 80% attendance = more than half a term of absence
  - 75% attendance = more than 9 weeks of absence

Please remember that I am unable to authorise absences during term time for family holidays. We would be grateful if parents/carers could also inform grandparents, family and friends, who may be looking to

book birthday or Christmas trips away, that these do not fall under exceptional circumstances and will not be authorised.

If you need any support regarding attendance, please do not hesitate to come and speak to us as we can help you access support from the school nurse, attendance officer or other appropriate services.

We recognise that children may sometimes have a legitimate reason to be absent from school, and we are also aware that some families face difficulties which may impact on their child's education, therefore, the traffic light system has been put in place to support families by highlighting concerns at an early stage.

We hope that you will continue to support our school by promoting school attendance and by informing us if you feel there are any issues that are preventing your child from attending school regularly.

*Our full school Attendance Policy can be found on our website.*

### **Promoting good attendance**

As part of weekly celebration worship:

- The benefits of good school attendance are shared
- The attendance of each class is monitored each week and the class with the highest attendance earns an extra playtime. This is recorded in the main school hall.
- One child from each class with 100% attendance is selected each week to visit the Dojo Shop in school.

Half termly:

- The overall attendance of each class is monitored each half term and the class with the highest attendance earns reward.

Termly:

- Attendance data is shared with parents and carers via parent-teacher consultations (autumn & spring) and end of year reports (summer).

---

**"Improving school attendance is everyone's business." Please support us in promoting the benefits of good attendance with your child - not only for their education but, also, to support their wellbeing and future life chances.**

---



1 - Mrs Jan Gurkin

If you would like to discuss this further, please get in touch with our attendance officer Jan Gurkin ([jan.gurkin@clennelleducationsolutions.org](mailto:jan.gurkin@clennelleducationsolutions.org)).

### **Attendance Headlines**

#### **Whole school attendance:**

- w/c 04/05/2026 - 96%
- w/c 11/05/2026 - 94%

#### **Highest class attendance:**

- w/c 04/05/2026 - Reception 99%
- w/c 11/05/2026 - Year 4 98%

### **Absence Headlines**

During this fortnight, 240 mins of learning time have been missed in school due to lateness. Please try to arrive on time at school, between 8:35am – 8:45am. Thank you. Our first lesson of the day is reading so children arriving late miss vital learning.

For children who arrive late, more than once in a week, we run a Friday lunchtime catch-up session with class teachers.

#### **Whole school absence:**

- w/c 04/05/2026 - 4%
- w/c 11/05/2026 - 6%

#### **Absence caused by holidays:**

- w/c 04/05/2026 - 1%
- w/c 11/05/2026 - 2%

#### **Other absences:**

- w/c 04/05/2026 - 3%
- w/c 11/05/2026 - 4%



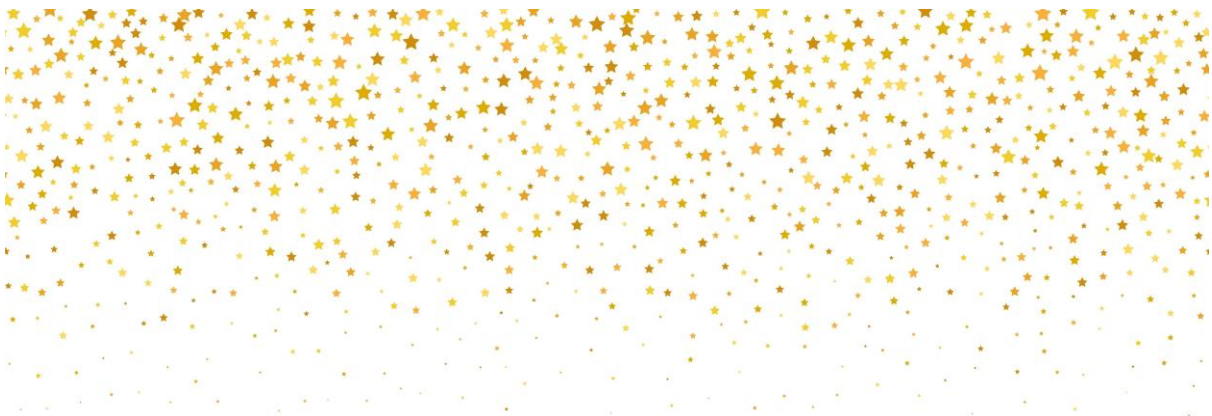
2 - <https://www.newcastle.gov.uk/services/schools-learning-and-childcare/parent-information/school-attendance-and-absence>

Leave of Absence requests can be made to the Headteacher *in advance* by the parent/carer the child normally lives with if you want to take your child out of school during term time, however, it is only able to be authorised if there are exceptional circumstances. You can be fined for taking your child out of school without the school's permission.

Please note, as per DfE guidance, we routinely refer families who have taken holidays during term time to the LA for fixed-penalty notices:

- For first offences within a three-year rolling period, each parent/carer could be fined £160 to be paid within 28 days, which can be reduced to £80 if paid within 21 days.
- For second offences within a three-year rolling period, each parent/carer could be fined £160 to be paid within 28 days, with no option to pay a reduced amount.
- For your third offence within a three-year rolling period, parents/carers will not be issued with a fine and will be referred straight to court. This could be a fine of up to £2,500, a community order or a jail sentence up to 3 months. The court also gives Parenting Orders.

## School Celebrations!





## **Demonstrating Love**

### **Nursery**

- Jacob
- Brooklyn

### **Reception**

- Henry
- Lucas

### **Year 1**

- Torin
- Amanah

### **Year 2**

- Sami
- Iyiola

### **Year 3**

- Aadriti
- Sacha

### **Year 4**

- Hadin
- Phoebe

### **Staff**

- Mrs Bannon



## **Demonstrating Determination**

### **Nursery**

- Nicolas
- Henry

### **Reception**

- Grace
- Henry

### **Year 1**

- Grace
- Yusuf

### **Year 2**

- Ollie
- Aaidah

### **Year 3**

- Fatima
- Anneloise

### **Year 4**

- Ranveer
- Jesse

### **Staff**

- Miss Blamire
- Mr Hunter



## **TIMES TABLES ROCKSTARS**

By the end of Year 4, children are expected to know all their multiplication tables up to 12 x 12 and Year 4 children undertake their statutory Multiplication Tables Check in the summer term.

Year 1 children should know by heart x2, x5, x10 (and corresponding division facts)

Year 2 children should know by heart x2, x5, x10, x3 (and corresponding division facts)

Year 3 children should know by heart x2, x5, x10, x3, x4, x8, x6 (and corresponding division facts)

Year 4 children should know by heart all tables to 12 x 12 (and corresponding division facts)

## **TTRS - Highest engagement**

**Year 1-** Ziyad

**Year 2-** Carter

**Year 3 -** Lyla

**Year 4 -** Teddy

## **TTRS - Highest accuracy**

**Year 1-** Hugo

**Year 2-** Jacob

**Year 3 -** Felix

**Year 4 -** Esim

**Current Rank amongst nearby schools:** 46/105

**Mean studio speed (seconds per question):** 3.15



### **Officially Unofficial Multiplication Tables Check**

Today all of the Year 4 pupils completed their final OUMTC - this is a mock test on TTRS of the Multiplication Tables Check that they will be partaking in after half term. It was fantastic to see the progress that the children have made so far and results were very positive. Further information about the actual Multiplication Tables Check can be found later in the newsletter.



### **HANDWRITING HEROES**

As a school, we continue to have a real drive to improve handwriting, letter formation and presentation of work. Each week, class teachers will choose someone who has worked hard to improve their presentation or who consistently demonstrates exemplary standards of presentation. Well done and thank you to the following children:

#### **Year 1**

- Ziyad
- Grace

#### **Year 2**

- Ayra
- Marcel

#### **Year 3**

- Benjamin
- Lyla

## Year 4

- Jesse
- Thanuja

## Social Action Groups



At ARFS, our social action groups serve as a practical outworking of the school's theologically rooted Christian vision, empowering our children to become "courageous advocates" for change. These groups encourage children to live out our school values of love and determination by identifying and responding to needs within their local and global communities.

By participating in these social action groups, our children develop early leadership skills and a lifelong commitment to social responsibility, recognising that their voices and actions can truly improve the lives of others.



3 - Green Team



4 - Energy Champions



5 - Play Leaders



6 - Library Champions



7 - Worship Council



8 - School Council



9 - Hall monitors



## **SCHOOL COUNCIL**

School Council met this week to discuss how they can approve the reflection area and how they can fundraise to buy these resources.



## **PLAY LEADERS**

We have had a very mixed bag of weather this week unfortunately, but our Play Leaders have been determined in their mission to support the play of all pupils. We have spent a lot of time under the reading shelter and they coordinated a group effort to tidy up the equipment after yesterday's sudden downpour!



## **GREEN TEAM**

Green Team have had a busy couple of weeks replanting flower pots, watering the new trees and re-filling bird feeders! We will resume our litter picking duties next week and get out and about in the local area.



## **WORSHIP COUNCIL**

Worship Council have planned and led our Ascension Service this week. Thank you to everyone who joined us at Church yesterday. It was lovely to welcome our Reception families too. Worship Council are already thinking ahead to Pentecost next week! The singing was fantastic, the reading was excellent despite the biblical conditions! We look forward to seeing you at St Nicholas' (opposite South Gosforth Metro) next Friday.



## **YOUNG LEADERS**

As we move towards the final few sessions of the Young Leaders award, the children will start to think about how they can leave a lasting legacy at ARFS - focusing specifically on how this may align with our school vision and values.



## **LIBRARY CHAMPIONS**

Our library champions have continued to work in the library this past few weeks ensuring everything is organised in Mrs Crozier's absence!

## Clubs for summer term 2 (June)



We are delighted to be able to offer a range of extra-curricular activities for our children.

- **Choir** with Charlotte from Music Partnership North - Monday 12:30pm (Years 1 - 4) email: [admin@archbishop.newcastle.sch.uk](mailto:admin@archbishop.newcastle.sch.uk)
- **All Stars Bible Club** (run by a group of parents and church volunteers) - Tuesdays (fortnightly) 12:30pm (Reception - Year 4) email: [beckymcbride90@gmail.com](mailto:beckymcbride90@gmail.com)
- **Violin** Monday after school with Charlotte from Music Partnership North (Years 3 & 4) <https://forms.office.com/pages/responsepage.aspx?id=wLSfsgQnN0q0YsEpSx4bR6HhZ8onp51DiB-iHdtAkHdUNzg1S08yUTdTR0hGRzJSMkQySU5PVUJFVi4u&route=shorturl>
- **Guitar** with Jack from Music Partnership North (Years 2, 3 & 4) - Tuesdays after school <https://forms.office.com/pages/responsepage.aspx?id=wLSfsgQnN0q0YsEpSx4bR6HhZ8onp51DiB-iHdtAkHdUNzg1S08yUTdTR0hGRzJSMkQySU5PVUJFVi4u&route=shorturl>
- **Gosforth Voices** (Years 2, 3 & 4) run by Music Partnership North on behalf of Gosforth Schools Trust <https://www.newcastlemusicsservice.co.uk/ensembles>
- **Gosforth Band** run by Music Partnership North on behalf of Gosforth Schools Trust (Years 3 & 4) <https://www.newcastlemusicsservice.co.uk/ensembles>
- **After School Football** with Lee Sterry (Years 3 & 4) Tuesday 3:30-4:30pm <https://www.ls-sc.co.uk/>
- **Lunchtime football** with Lee Sterry. No need to book and no charge - just bring a change of shoes and come along! (Year 3 & 4 12:00 - 12:20pm, Years 1 & 2 12:20-12:40pm)

*Please note that any issues relating to clubs organised by external providers should be made directly to them, not to school, please.*



10 - Breakfast Club runs daily, 7:45am - 8:45am

## **BREAKFAST CLUB**

We are pleased to offer our own Breakfast Club (7.45am - 8.45am) and After School Club (3.15pm - 5.30pm) in our school hall. If you have any queries regarding menus or activities, please email [wraparound@archbishop.newcastle.sch.uk](mailto:wraparound@archbishop.newcastle.sch.uk)

Breakfast Club sessions cost £6.00 to include breakfast of cereal/toast and milk/orange juice. Children must arrive before 8.15am if they require breakfast.

The URL to access the booking system is <https://archbishop-runcie.cbfs.uk/>

**Contact email address:** [archbishopruncie@childcarebookingsforschools.co.uk](mailto:archbishopruncie@childcarebookingsforschools.co.uk)

**Contact phone number:** 01444 523335

**REDUCED PRICES & SUBSIDISED COSTS:** If you are entitled to Tax Free Childcare, then in effect this will reduce the cost of childcare by 20% (equivalent to £4.80 a day). See : <https://www.gov.uk/tax-free-childcare>.

If you receive Universal Credit, you may be able to claim back up to 85% of the cost of childcare. This means Breakfast Club would only cost 90p a day! Check here: <https://www.gov.uk/help-with-childcare-costs/universal-credit>

## **AFTER SCHOOL CLUB**

Our After School Club runs 3:15-5:30pm, Monday - Friday.

Afterschool Club:

- 3.15- 4:15pm is £6.00
- 3.15-5.30pm is £12.50 and includes a snack and drink.

This week, we have been gathering suggestions from our children (at ASC) and parents/carers (via the display board in the main entrance). We are delighted to announce that the children have voted to have a Film Night to watch 'How to train your dragon' on Thursday 5th February. This is open to all but spaces must be booked as normal via Childcare Bookings for Schools.

Bookings for Wraparound Care are managed by Childcare Bookings for Schools. You can pay using either a debit/credit card or using childcare vouchers.

The URL to access the booking system is <https://archbishop-runcie.cbfs.uk/>

**Contact email address:** [archbishopruncie@childcarebookingsforschools.co.uk](mailto:archbishopruncie@childcarebookingsforschools.co.uk)

**Contact phone number:** 01444 523335

**REDUCED PRICES & SUBSIDISED COSTS:** If you are entitled to Tax Free Childcare, then in effect this will reduce the cost of childcare by 20% (equivalent to £4.80/£10 a day). See : <https://www.gov.uk/tax-free-childcare>.

If you receive Universal Credit, you may be able to claim back up to 85% of the cost of childcare. This means After School Club would cost from 90p per day! Check here: <https://www.gov.uk/help-with-childcare-costs/universal-credit>

# Out of Hours Emergency Number

*11 - Wraparound phone can be used outside school office hours (7:45-8:45am/3:15-5:30pm)*

Wraparound have a mobile phone that parents/carers can use outside of school office opening times. This number should be used before 8am or after 3:30pm if you need to contact the wraparound team.

They can be contacted by calling 07340117366. This phone is not active during the school day and should not be used to make or cancel bookings.

## Collective Worship

We have been busy, over the last couple of weeks, reflecting on the events after Jesus rose again. We have reflected on the season of Eastertide and some of the stories from the Gospels that tell us about events in those forty days before his ascension. These accounts show the profound shift from grief to joy as the disciples encountered the risen Christ on the road to Emmaus, in the Upper Room, and by the Sea of Galilee. Through these moments, we see how doubt turned into a fierce, unwavering faith.



## **ASCENSION SERVICE**

I'm sure you will join me in thanking Worship Council for leading such a joyful Ascension Service yesterday. The singing was wonderful and it was lovely to have our Reception friends and their families join us in church. Thank you to everyone who came along in such awful weather!



## **PENTECOST SERVICE**

Next Friday, we will have a celebration of Pentecost at St Nicholas' Church. Please do come along and join us if you are able to.

As usual, children can either be collected from Church at 2:15pm or they can return to school for usual collection arrangements. Please complete the ParentMail form to indicate whether your child will be collected or should return to school.

Nursery children are warmly invited to attend with a parent/carer and can be collected from school at 1:00pm.



**ALL SAINTS' NEWS**

**City of Newcastle Male Voice Choir Concert**

A 2-hour concert will be held on Saturday 9th May at 7:00pm. Admission is free, with donations welcome in support of the church's ministry and mission.

### All Saints Centre Upgrade – Drop-in Session

A drop-in session for anyone wishing to learn more about the planned upgrade to the All Saints Centre will take place on Friday 15th May, 7:00–8:30pm, in the Columba Room.

### Messy Church

The next services will be held at **3:00pm** in the All Saints Centre on:

- **Sunday 31st May** – Theme: *Pentecost*
- **Sunday 28th June** – Theme: *Miracles* All are very welcome.

### Farmers' Market

The next Farmers' Market will be held in All Saints Church on Saturday 16th May, 10:30am–2:00pm. There will be a variety of stalls offering fresh produce, along with a full programme of music in the church and steel pans on the green.



## PTFA update



### **SUMMER SOCIAL**

On Friday 12th June, the PTFA will be hosting a 'Summer Social' event from 3:15pm. More info will follow from the PTFA but please save the date!



### **ARFS TEA TOWELS**

We are planning to design a 2026 school commemorative tea towel, on which every child in the school will feature. The tea towels will be printed in full colour, with a self-portrait of your child, as a footballer, dancer, a stick figure, or even just a head and face with eyes and hair...! This will provide a fun and treasured memory of your child and their schoolmates. It would make a fabulous present to give to grandmas, grandads and so on. The tea towels are made out of eco-friendly 100% cotton, and printed in full colour, high -quality digital print. After costs, all proceeds will go to the PTFA to provide additional resources for the children to use at school.

Cost: 1 tea towel: £9, 2 tea towels: £16, 3 tea towels: £21

You will be able to make payment for this through ParentMail.

Further information will be sent next week.



## EASYFUNDRAISING

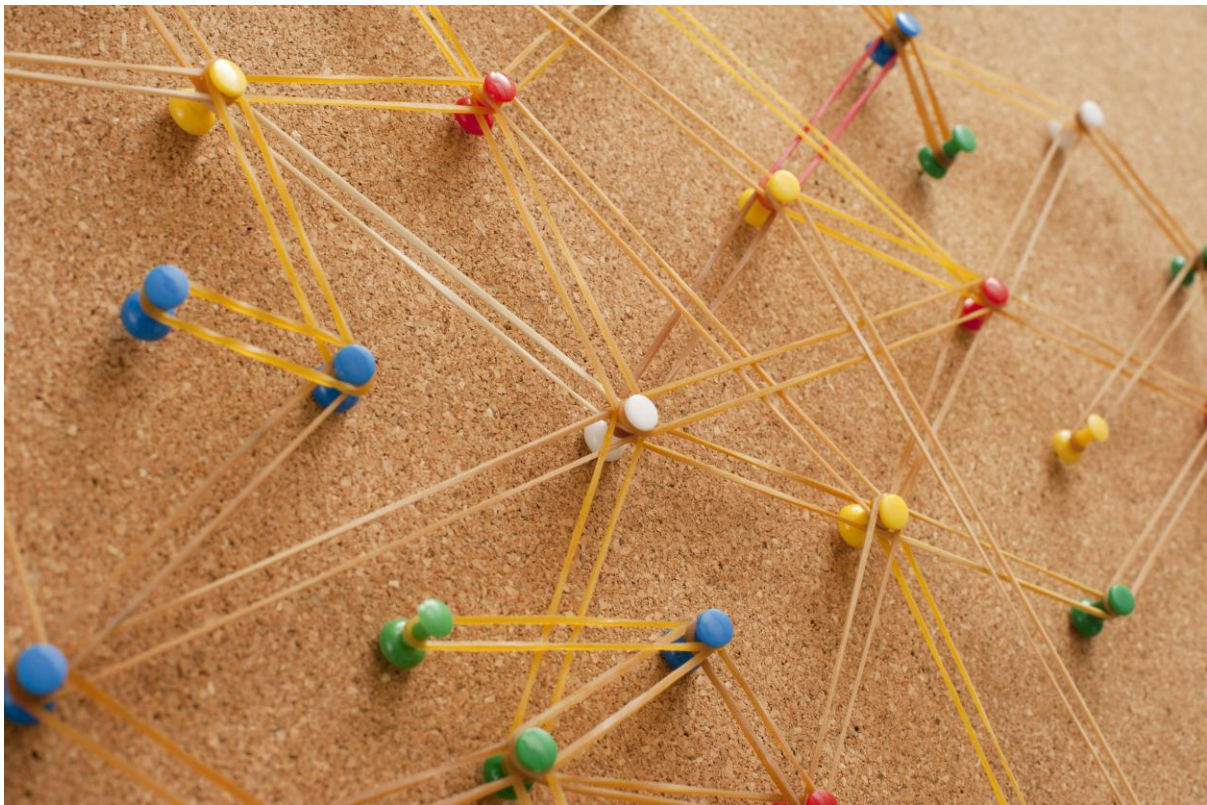
Shop with over 8,000 retailers via #easyfundraising and earn a free donation for Archbishop Runcie First School PTFA, Gosforth at the same time.

All the big names like eBay, Argos, John Lewis & Partners, Etsy, Tesco and Just Eat are ready to donate. It won't cost you anything extra!

Please sign up today and they could win a £250 donation:

<https://join.easyfundraising.org.uk/archbishoprunciefirstptfa/kxzsy/s2s/FZ9Up2Ac/SE870/facebook/>

## School News





**Cyclists  
please  
dismount**

### **BIKES AND SCOOTERS ON THE YARD**

To ensure the safety of all our children, please remind your child(ren) to dismount their bikes and scooters as soon as they enter the school yard. The playground becomes very busy during drop-off and collection times, and riding wheels in crowded spaces significantly increases the risk of accidental collisions and injuries. By stepping off and pushing their wheels, children help keep the yard a safe and welcoming environment for everyone, including younger siblings and toddlers. We greatly appreciate your support in reinforcing this simple safety routine with your children each day. Thank you.



### **WALK TO SCHOOL WEEK**

Walk to School Week 2026 runs from Monday 18 May to Friday 22 May 2026, encouraging pupils to walk, wheel, scoot, or cycle to school to improve health and reduce pollution. Organized by [Living Streets](#), the 2026 five-day challenge, themed "Mission Move," invites pupils to complete daily walking challenges to earn rewards.

## Relationships Education, Relationships and Sex Education (RSE) and Health Education

Statutory guidance for governing bodies,  
proprietors, head teachers, principals, senior  
leadership teams, teachers

### RSE POLICY

As part of our standard statutory duties, we are sharing an update regarding our long-standing Relationships, Sex and Health Education (RSHE) policy, which has now been refreshed to align with the government's updated national guidance. While the core focus of our curriculum remains firmly on building healthy, respectful real-life relationships, the revised guidance introduces essential modern updates covering digital safety, online risks, and student wellbeing. In line with requirements to keep families fully informed of these main changes, our updated policy is now available on the school website and we warmly welcome your feedback as part of our review process.

The full DfE guidance can be found here: <https://www.gov.uk/government/publications/relationships-education-relationships-and-sex-education-rse-and-health-education>



alamy

### LATE COLLECTION

#### Uncollected children – After School

If a parent/carer is unable to collect their child after school, or will be late, they should inform the school office as soon as possible, with details of the alternative contact who will be collecting their child.

If a child is not collected by 3.20pm, then they will be taken to After School Club and invoice raised and sent to the parents/carers for payment of the full session. Persistent late collection may be a Safeguarding concern and will be dealt with in line with the school's Safeguarding policies.

#### Uncollected children – After School Club

If a child has not been collected by the end of the extended school session (5.15pm or 5.30pm dependent on session booked) parents will be contacted in the first instance by telephone. The additional contacts parents have provided will be telephoned in the second instance. If these contacts are unavailable after approximately one hour/at the discretion of SLT, the police and Social Services will be informed.

Late fees:

- up to 15 minutes late - £25
- 15-30 minutes late - £50
- over 30 minutes late - £100



## **NEWCASTLE KINSHIP ZONE**

Newcastle City Council is part of a pilot funded by the UK Government to help increase support for Kinship carers. As part of this pilot, Kinship carers can apply for an allowance that will be paid for the next 3.5 years.

### **Can I apply for the Kinship Zone Allowance?**

You must have proof of either a

- A Special Guardianship Order a child who:
- A Child Arrangements Order was a child in care in
- A Residence Order

or

- Be in private court proceedings for an SGO or CAO and have passed the FHDRA (First Hearing Dispute Resolution Appointment). You can ask your solicitor about this.

You may be eligible if you care for a child who:

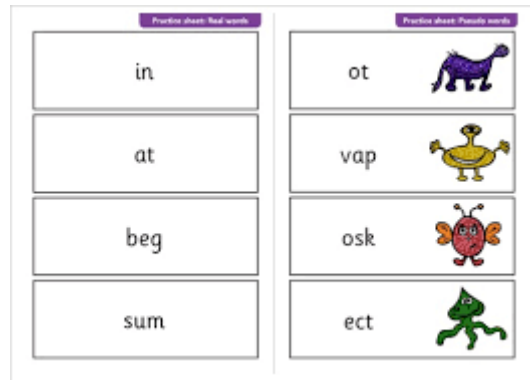
- Was a child in care in Newcastle **or** Lived in Newcastle before they came into your care
- Currently lives in Newcastle and has been in your care for more than three years

### **How do I apply?**

Head to the website to apply:<https://new.newcastle.gov.uk/kinshipKinshipZones>

Get in touch:0191 277 2430 [kinshipzone@newcastle.gov.uk](mailto:kinshipzone@newcastle.gov.uk)

Kinship funding is not means tested, so sometimes people don't realise they are eligible.



## STATUTORY ASSESSMENTS

### YEAR 1 PHONICS SCREENING CHECK

As you know, children in Year 1 will take part in their Phonics Screening Check during the week of 8th June. The check will assess children's ability to read a range of words including the sounds they have learned during Reception and Year 1. Mrs Crozier ran a parent workshop for this in both September 2025 and April 2026. Over the past few months, resources have been sent via ParentMail with an individual phonics pack sent home in February. More information can be found [here](#).



### YEAR 4 MULTIPLICATION TABLES CHECK

Additionally, Year 4 will take part in their Multiplication Tables Check between Tuesday 2nd June - Friday 12th June. It will assess children's ability to recall multiplication facts from all the tables they have learned in Years 2, 3 and 4. Mrs Ellwood held a parent workshop for this in spring term and the PowerPoint has been shared with all Year 4 parents. More information can be found [here](#).

Mrs Ellwood has sent individual "heat maps" home today for all children so parents and carers can see which multiplication questions they are struggling with. Thank you in advance for your support.

# LEAVERS 26

## YEAR 4 LEAVERS'

Staff from GCMS have now visited school several times to meet our Year 4 children. They observed children learning with Mrs Ellwood and, over the next few weeks, GCMS staff will be leading some lessons. Some of our children have undertaken visits in small groups and fed back to their peers. Mrs Ellwood has met with the head of Year 5 and the SENCo at GCMS to share relevant information about transition.

The SEMH team will be working with a small group of children, in school, in preparation for transition (relevant parents have been informed via email).

SEND reviews for children in our current Year 4 class will take place on Wednesday 3rd June (please sign up via ParentMail). These will be attended by Mrs Ellwood and the SENCo from GCMS.

Children who are transferring to our feeder middle school, Gosforth Central (GCMS), should come to school as normal, via the KS2 cloakroom door, on both transition days (Wednesday 8th & Thursday 9th July) and a member of our staff will walk them to GCMS at 9:00am to begin their transition days. They will be collected at 2:45pm and dismissed, as usual, from ARFS via the Year 4 cloakroom door on both days.

All children in transition years from Church of England Schools in our Diocese are invited to attend the Leavers Service at Newcastle Cathedral on Thursday 18th June. This will be an opportunity for our children to reflect upon their time at our school and think about their next steps as part of our wider Diocesan family of schools.

Additionally, Year 4 will be holding their Year 4 Leavers' Service in school on Friday 17th July at 9:15pm and parents and carers are warmly invited to attend. Tea and coffee will be provided. As always, bring your tissues, as it is sure to be an emotional event!



## NEW NURSERY WELCOME EVENTS

We can't wait to welcome all of our new Nursery parents to come and look around our provision and hear key messages for the forthcoming year on Tuesday 30th June at 5.30pm. Parents will hear about all of the exciting things their child will do as we welcome them into our Nursery family.

### **NEW RECEPTION WELCOME EVENTS**

Our meeting for parents of children starting Reception is Tuesday 23rd June at 5.30pm (this meeting is not for children). Children will then take part in transition days where they will have the chance to meet staff and play in their new classroom.

On Wednesday 8th July, existing Nursery children will spend the morning in their new classroom. Children new to our school are welcome to join us for the morning along with their parent or carer.

On Thursday 9th July, *existing Nursery children and children new to school* will spend the morning together in their new classroom and will all stay for lunch. Children who are new to school will leave school after lunch. All arrangements will be fully explained at our welcome meeting.



### **INTERNAL TRANSITION**

For children currently in Reception-Year 3, transition activities will take place on Wednesday 8th & Thursday 9th July. On these days, children in current Reception and Year 1 should enter school via their usual door (KS1 cloakroom) and children in current Year 2 and 3 should enter via the KS2 cloakroom door (next to the field). Children will spend two full days in their new class with their new class teacher and support staff.



### **DONATIONS NEEDED, PLEASE!**

As summer arrives, we are looking forward to re-stocking and enhancing our playground activities for all our children. Our older children enjoy playing outside as much as the younger ones and we are looking for ways to keep playtimes fun and interesting. If anyone has any of the following items they could donate, we would be most grateful. Thank you!

- Dressing up costumes (age 6+)
- Dance/cheerleader pom-poms/props
- Children's magazines - National Geographic, Bang Whizz Pop, Eco Kids Planet and Lego are loved the most!
- Non-fiction books about British garden wildlife
- Pots, pans and utensils
- Tennis balls



## **CAKE SALE**

The next cake sale will be run by Reception on Thursday 21st May - all donations will be gratefully received. Please remember to list ingredients of any homemade goodies! Thank you.

**Please note that our cake sales are now cashless.** Contactless payments can be made with a debit card or phone via our school SumUp machine.

## Sporting News



### **RUNNING CLUB**

Well done to everyone who took part in our running club in preparation for the Children's Cancer Run this Sunday. We have had an excellent turnout and everyone is looking forward to the big day on Sunday! Thank you to Miss Armstrong and Miss Lawton for running the sessions.



### **Children's Cancer Run, Sunday 17th May 2026**

A reminder that the Children's Cancer Run is this Sunday – we hope to see lots of you there. This is always such a lovely day for everyone involved and one that we look forward to every year!

**Children and staff who are taking part are welcome to wear their race t-shirt and medal for school on Monday next week.**

Online registrations are open until Midnight on Friday 15th May but runners can go along tomorrow or Sunday and still take part.

- Please arrive at Newcastle Racecourse, Gosforth Park by 9:15am
- Meet by our school flags (next to the finish line) between **9:15am-9:30am** or the **school meeting point from 9:30am**
- We will be taking part in a warm up a few minutes before our start time so please come along to join in.
- Please remember to pin your run number to the front of your t-shirt (completing the details on the reverse) with safety pins and our school logo to the back.
- **Our school will be running at 9:50am.** Our allocated carpark is carpark A.
- Bring a small bottle of water to drink on the way round.
- Please remember any inhalers or other medication for you or your child.
- Please bring sun cream and a sun hat if required.
- Please bring a picnic rug or blanket to sit on!
- Once you have finished the run, please meet back at our camp (next to the finish line), to enjoy your snack pack with the rest of the school team.



#### **YEAR 4 RESIDENTIAL**

On Tuesday 5th May, Year 4 embarked on their residential up to Seahouses in Northumberland. Our first destination was Alnwick Gardens where we visited the Poison Gardens, completed the Reg the Hedge

worksheet and enjoyed spending some leisure time with our classmates. We then headed to Seahouses and after dropping our luggage at the hostel, we had our evening meal in Neptunes and all of the children (and staff) devoured a delicious meal of fish and chips! After a walk along the harbour and an ice cream, we headed back to the hostel for movie night and belated birthday cake from Mrs Ellwood.

Day two was spent at Beadnell Bay where, despite the chilly sea temperatures, the children enjoyed paddle-boarding and coastering with the team from KA Adventures.

The Year 4 pupils were fantastic and really embodied our school values of Love and Determination and made the staff extremely proud! A huge thanks to Mrs Ellwood, Mrs Norman and Mrs Massey for giving up their time to allow the visit to happen.

### **GST DANCE SHOWCASE**

This will take place at GEMS on Wednesday 17th June at 6pm. Children taking part will be allocated 2 tickets each. Please see ParentMail that was sent out to those taking part earlier this week for further information.

Miss Armstrong will be walking along to GEMS with the children after school where they will begin rehearsals at 4:30pm. Please speak to Miss Armstrong if you have any questions.

### **Volunteer with us!**



We are always looking for people to come and help in school! If you are interested in helping in school, please contact Mrs Coates in the school office ([admin@archbishop.newcastle.sch.uk](mailto:admin@archbishop.newcastle.sch.uk)). All volunteers will require DBS clearance, and will need to provide references in line with our commitment to Safer Recruitment.

We are looking for the following volunteers:

- *Librarians*
- *Playgroup helpers*
- *Reading buddies*
- *School visit volunteers*

*Please note that volunteers must not use their mobile phones during school visits and they must maintain confidentiality at all times.*

## Dates for your diaries



Please see diary dates attached - this term is a busy one so please check you have added everything to your calendar! Dates can also be viewed on the school calendar at <https://archbishop-runcie.eschools.co.uk/web/calendar>

Mrs Coates regularly puts reminders of events on Facebook and Instagram to prompt parents too - please follow us to keep up with what's happening in school!

## Safeguarding



### **WORRIED ABOUT A CHILD?**

Mrs Massey, Mrs Francis, Mrs Crozier and Mrs Ellwood are our school's Designated Safeguarding Leaders (DSLs). Mr Brown is DSL for Wraparound care. Children are regularly reminded who they can talk to if they are worried about something in school.

If you have concerns about a child, please contact one of us. **If it is an emergency and a child is in immediate danger, please call the police.** Members of the public can also report concerns to Children's Social Care directly. If you have a concern about a child please contact one of the following:

If you have a non-emergency concern about a child contact:

- Initial Response Service – 0191 277 2500
- Emergency Duty Team – 0191 278 7878 (out of hours)
- Northumbria Police – 101 (in an emergency always dial 999)
- NSPCC Helpline – 0808 800 5000

There is also a secure online referral form available for you to explain your concern, if you are a member of the public. <https://nccportal.newcastle.gov.uk/forms/referral/public>

All concerns that a child or young person is suffering or is at risk of suffering significant harm must be referred directly to the Initial Response Service of Children's Social Care in accordance with the Newcastle Safeguarding Children Board Procedures. Please refer to the Newcastle Safeguarding Children Partnership website for safeguarding policies and procedures. For more information, you can read our Safeguarding and Child Protection Policy on our school website.



## **WOMEN'S AID CAMPAIGN**

Although we recognise domestic abuse comes in many forms and perpetrators are not always men, Women's Aid have launched a new campaign, 'The Monster Who Came to Tea', highlighting the impact of domestic abuse on both women and children. The film tells the story of a mother and daughter experiencing domestic abuse, seen through the eyes of a young girl named Lily. Alongside the film, Women's Aid have written an open letter calling on the Government to improve funding for specialist domestic abuse services.

**Read the news story:** Women's Aid launched sobering children's book 'Monster who came to tea' and calls on the Government to improve funding for women and children survivors of domestic abuse. You can read the story [here](#).

**Watch the film:** The Monster Who Came to Tea [here](#).



**E-SAFETY UPDATE FOR PARENTS FROM ALAN MACKENZIE (ONLINE SAFETY SPECIALIST)**

Virgin Media and Internet Matters have released a wonderful new resource for parents/carers. Called 'Find the Right Words', the video and resources help with some of those difficult conversations about how to keep children safe online. Link - [Find the Right Words](#).

Steam is a huge digital distribution platform for PC gaming and hugely popular with children and young people. Basically Steam acts as a storefront, installer, launcher and social network for 30,000 games. Because of the vast range of games, some of which will not be suitable for children, it's important that parents understand the controls that are available to them on the Steam platform. Internet Matters have a 1-minute video on YouTube which will help with this. Link - [Parents video guide to Steam parental controls](#).

Many children will have seen or heard some of the horrific events that have been happening recently. Whether that's on the news, someone discussing it, or perhaps online, children can be traumatised by what they are seeing and hearing. This article from The Conversation discusses the issue and gives some really good advice. Link: [The Conversation - How to talk to children when terrorist attacks and violence dominate the news](#).

Roblox have been making some big changes recently, and that now includes 'age-gating' so that children and young people get the experience according to their age. This means that there are now 3 types of Roblox accounts:

- Roblox Kids - for children 5-8 years.
- Roblox Select - for children 9-15 years.
- Roblox - for anyone 16+.

For any users that have not completed an age check, they will be put into the youngest users category and parents can update or correct a child's age through a linked account. The link below will take you to a simplified breakdown of the different accounts.

Link: [What are Roblox Kids and Roblox Select?](#)



## Community Notices



### **SEND PARENTS & CARERS SUPPORT GROUP**

Does your child have a special educational need or disability? Would you like to talk to other parents/carers or get advice from professionals? Whether your child has a formal diagnosis or not, you are invited to drop in to the SEND Support Group for an informal place to chat and get advice.

These sessions run every Friday 10:00am-11:30am and Tuesdays 4:00-5:30pm at Gosforth Civic Theatre. No need to book - just turn up!

### **COMMUNITY HUB NORTH**

Children & Families Newcastle is part of a community network providing activities and services across four localities in the city for babies, children, young people and families. We are part of the North Community Hub. Community hubs link to other buildings in the locality to create a network of venues that offer activities and services.

The community hubs also offer a range of services including – health visiting, family support, community midwifery, mental health support, children’s therapies, youth provision, training opportunities, childcare and employability services. To find out what is available near you, telephone your local Community Hub at Fawdon Children’s Centre, Cairns Way, Newcastle upon Tyne, NE3 2SN. Telephone 0191 2115773 Monday to Friday 8.30am to 4.30pm.

<https://www.newcastlesupportdirectory.org.uk/north>



**Would you like to learn about autism, parent well-being and find community?**

Funded by the National Lottery  
COMMUNITY FUND

Are you a parent/carer of an autistic child aged between 2-15 years old?  
Has your child been diagnosed within the last two years?  
We would love you to join one of our free parent groups funded by the National Lottery Community fund.

- **Empower-Autism** groups help parents/carers understand and adjust to the new diagnosis, parent their autistic child well, and stay healthy and well as a parent/carer.
- **Empower-Autism** consists of five 3-hour sessions delivered online. Sessions are led by two facilitators who have substantial professional expertise and their own lived experience.
- **Empower-Autism** has been developed by researchers at the University of Manchester and evaluated in a large clinical trial. Results showed that parents/carers really value the programme and experienced significant benefits that lasted over the course of a year.

**"I've learned to see the world how my son sees it"**  
— PARENTS OF AUTISTIC CHILDREN

**"It's a good mental well-being toolkit"**

For more information please visit our website  
[www.empower-autism.co.uk](http://www.empower-autism.co.uk)  
Or contact our team at [enquiries@empower-autism.co.uk](mailto:enquiries@empower-autism.co.uk)

MANCHESTER 1824  
The University of Manchester



12 - For family support, please scan.



## SEND LOCAL OFFER

The Local Offer tells you what support is available in Newcastle. You can find out about schools, health services, and activities. It also helps families get the right help and support.

<https://childrenandfamiliesnewcastle.org.uk/send-local-offer>



## Contact Us



### Archbishop Runcie CE First School

Christon Road

Gosforth

Newcastle upon Tyne

NE31US

Visit us on the web at <https://archbishop-runcie.eschools.co.uk/web>

**Tel:** 0191 285 2663

**email:** [admin@archbishop.newcastle.sch.uk](mailto:admin@archbishop.newcastle.sch.uk)