



# October 2020

## Newsletter 7 – 16.10.20

### PTFA UPDATES



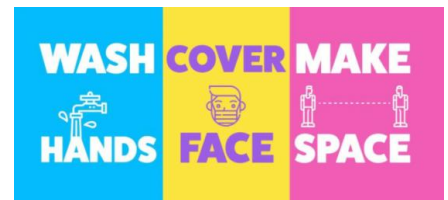
Next Thursday (22<sup>nd</sup> October), children are invited to the PTFA “break a school rule” day. This may involve wearing nail varnish or having colourful or untidy hair, wearing a hat, trainers or an oversized hair accessory, in exchange for a donation of £1.00. Children can only choose **one rule** to break so make it count! The rest of their uniform should still be worn please. The PTFA will be standing on the school gates 8:35-9:00am with collection buckets for donations. Thank you in advance for your support.

The PTFA will also be holding their AGM on Thursday 19<sup>th</sup> November at 8:15pm via Zoom. They would welcome your attendance and hope to see some of our new families coming along too! If you would like to get involved, please email the PTFA on [archbishopruncieptfa@gmail.com](mailto:archbishopruncieptfa@gmail.com)

They will be in touch with details of other forthcoming events in due course. All proceeds benefit our school and our children so please do support them if you can. Thank you!

### COVID-19 UPDATES & THANK YOU

I have attached two really useful documents from Newcastle City Council for your information. The first is a flow diagram to support families with children to decide whether they need to arrange a test. The second is to support the community to understand the new COVID alert system. We are in the “high” category.



We are very much looking forward to welcoming the staff and many of the children who have been self-isolating back to school on Monday.

Thank you to you all for your support towards the school over the last few weeks. A big thank you, in particular, for adapting to all of the changes this term so quickly and positively. We feel privileged to work in such a supportive community.

I would also like to thank our fabulous staff team who have taken on additional duties and extra hours this term to ensure the school runs effectively for the children in our care. It is very much appreciated!

## SINGLE PARENTS SELF ISOLATING



If you are self-isolating, you are not allowed out of your home to drop your child off at school, even if you are not symptomatic and your child is not self-isolating.

However, there are several possible solutions:

- Ask friends or family to support you with informal childcare
- Contact the Council Welfare line:

<https://forms.office.com/Pages/ResponsePage.aspx?id=wLSfsgQNnOqOYsEpSx4bRxTGe5nddnJKqbKHb0AgO4BUOEJYSU1LSUdBNiYzVkJaKkVZRIlaWIFCMC4u> or 0800 1707001

## HOME LEARNING



I would be really grateful if all families could take the time to answer a **very short** questionnaire about home learning that has been sent today, please.



Next week, I will be asking all those parents of children who have accessed Tapestry for home learning since September, in the event of self-isolation, to complete an evaluation questionnaire. Thank you in advance for your participation and feedback.

A reminder that all children are expected to read daily at home, please. We would be grateful if you could record your comments in Reading Records please. If books have been removed from Reception or Year 1 book bags, to be changed, you can still 'read' using phonics cards, which will still be in book bags. Thank you!

## ALL STARS BIBLE CLUB

Our lunchtime Bible Club, run by a small team of parents, is not currently able to take place in school. However, our fantastic club leaders are hoping to send out Bible story videos, crafts, songs etc as they did last term to the parents of any children who are interested in receiving these from us.



Please could interested parents email [susan\\_abraham@hotmail.co.uk](mailto:susan_abraham@hotmail.co.uk) if their child is interested in receiving e-mails from All Stars Leaders (even if your child was already on last year's list). Thank you!



## YEAR 5 APPLICATIONS

The closing date (31st October) for Year 5 applications is quickly approaching for parents to apply for a Middle School place for September 2021. As the deadline is during half term, we wanted to remind parents of Year 4 children to apply. Currently, only **86% of our Year 4** children have submitted an application.

## PACKED LUNCHES

As you know, we are an accredited "Healthy School". Please remember no sweets, chocolate bars or fizzy drinks in packed lunches! We really appreciate your cooperation and support in keeping lunch boxes healthy. It is really important that the children on packed lunches bring something filling such as sandwich or pasta (or other carbohydrates) that will fill them up for the afternoon rather than just crisps and other processed snacks. Please do not send foods containing nuts because of allergies amongst the other children. Thank you.



Please remember to cut grapes in half so they do not present a choking hazard. Thank you!

As stewards of God's earth, we ask that you consider using **reusable food containers** for packed lunches and fruit snacks, rather than disposable food packaging where possible please and avoid sending disposable plastic cutlery or straws in packed lunches. Thank you.

## CHARITABLE GIVING

After half term, each class will have a small stock of poppy appeal merchandise which can be purchased, each morning. Suggested donations are as follows:

- Traditional poppy (adhesive) 50p
- Slap bands £1.50
- Reflective poppies 50p
- Silicone wristband £1.00
- Zip-pull 50p



## NURSERY PLACES

We still have some places available in our Nursery Class. If you would like to find out more information, please contact Mrs Francis. We would love to meet your little ones!

## SAFEGUARDING

Mrs Massey and Mr Booth are our school's Designated Safeguarding Leaders. If you have concerns about a child please contact one of us. If it is an emergency and a child is in immediate danger please call the police.

Members of the public can also report concerns to Children's Social Care directly. If you have a concern about a child please contact one of the following:

- **Initial Response Service** – 0191 277 2500
- **Northumbria Police** – 101 (in an emergency always dial 999)
- **NSPCC Helpline** – 0808 800 5000



There is also a secure online referral form available for you to explain your concern, if you are a member of the public. <https://nccportal.newcastle.gov.uk/forms/referral/public>



I aim to resume fortnightly newsletters going forward but will, of course, be flexible in response to events in school and will keep you as informed as possible!

Wishing you all a happy and restful half term, when it arrives! Please remember next Friday is a staff training day and school is therefore closed to children until Monday 2<sup>nd</sup> November.

With my very best wishes as always,

*Mrs KE Massey*

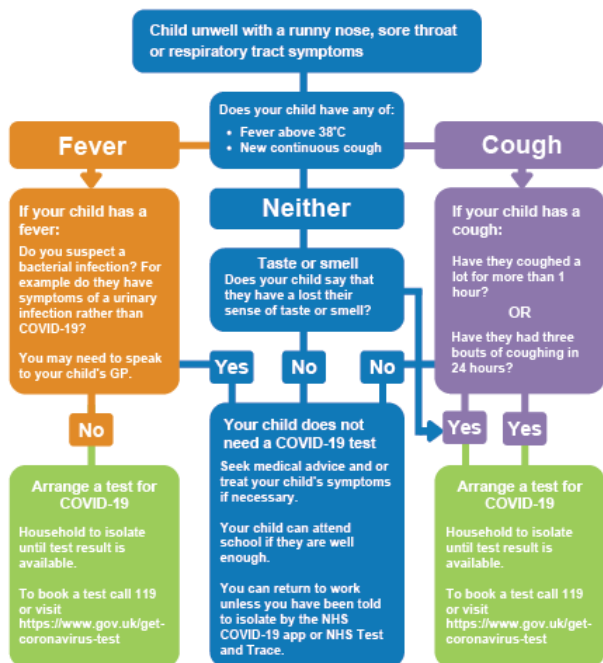
Headteacher





## COVID-19 guidance for families with children

This flowchart should be used as guidance only by families with children. If you suspect your child has COVID-19 please arrange a test.



For more information on COVID-19 visit [www.newcastle.gov.uk/coronavirus](http://www.newcastle.gov.uk/coronavirus)

# Operation SANTA PAWS POSTER COMPETITION

DESIGN A POSTER THEMED AROUND THE PREVENTION OF ANIMAL CRUELTY & NEGLECT.

TO ENTER PLEASE DONATE PET FOOD, TOYS, & BLANKETS. THESE THINGS WILL HELP OUR ANIMAL FRIENDS IN NEED THIS CHRISTMAS.

**PRIZES INCLUDE**

- XBOX CONSOLES
- ANDROID TABLET
- KIDS CLOTHING
- CANDY HAMPER
- PERSONAL FITNESS

**DEADLINE 27TH NOVEMBER**

SPONSORED BY:

- [WWW.NTFINVESTIGATIONS.COM](http://WWW.NTFINVESTIGATIONS.COM)
- [WWW.AVALONIA.ONLINE](http://WWW.AVALONIA.ONLINE)
- [FACEBOOK.COM/IRONSISTERSFITNESS](https://FACEBOOK.COM/IRONSISTERSFITNESS)
- [WWW.TRUEYSCRAMPTIOUSWEETS.CO.UK](http://WWW.TRUEYSCRAMPTIOUSWEETS.CO.UK)
- [ACTCLEANINGSPECIALISTS.CO.UK](http://ACTCLEANINGSPECIALISTS.CO.UK)
- [BREAKFREECOUNSELLING.CO.UK](http://BREAKFREECOUNSELLING.CO.UK)

FOR INFO CONTACT PETER BAKER  
07988595230  
3070@NORTHUMBRIA.PNN.POLICE.UK

ALL DONATIONS WILL BE GIVEN BEFORE CHRISTMAS TO

HM Government

NHS

## LOCAL COVID ALERT LEVEL

# HIGH

<b>Social Contact</b> 1 household / bubble indoors. Rule of six outdoors.	<b>Weddings and Funerals</b> Up to 15 guests for weddings and up to 30 guests for funerals, 15 for receptions, wakes and related ceremonies.	<b>Overnight Stays</b> Overnight stays permitted subject to social contact rules.	<b>Working from home guidance</b> Work from home where possible.
<b>Shopping and Retail</b> Open.	<b>Leisure and gyms</b> Open.	<b>Hospitality</b> Open with some restrictions including 10pm closing time and table-service only.	<b>Entertainment and tourist attractions</b> Open, except nightclubs and adult entertainment.
<b>Education</b> Schools, FE colleges open. Universities must reflect wider restrictions.	<b>Healthcare Services</b> Open.	<b>Residential Care</b> Closed to external visitors other than in exceptional circumstances.	<b>Travel and Transport</b> May continue to travel to open services, but reduce number of journeys where possible. Avoid travel into local COVID Alert Level Very High areas where possible.
<b>Sporting Activity</b> Organised sport / formal physical activity allowed in outdoor settings. Indoor organised sport must follow social contact rules (other than youth or disabled sport).	<b>Worship</b> Open, subject to social contact rules.	<b>Childcare</b> Registered and unregistered childcare, supervised activities permitted in private homes. Children's groups permitted. Childcare bubbles for under 16s.	<b>Youth Clubs and Activities</b> Permitted.

There are three simple actions we must all do to keep on protecting each other:

- Wash hands** keep washing your hands regularly
- Cover face** wear a face covering in enclosed spaces
- Make space** stay at least 2 metres apart - or 1 metre with a face covering or other precautions

For more information and detailed guidance visit:  
[gov.uk/coronavirus](http://gov.uk/coronavirus)



## “Love to learn, learn to love”

Please note that all activities in school are for children and staff only at this time.

October 2020			
Wednesday 21 <sup>st</sup> October	Year 1 PSHE sessions on “Pants are Private”		In curriculum time
	Gosforth Band (online)	3:45-4:30pm	Please register via link in Newsletter 3
Friday 23 <sup>rd</sup> October	Staff Training Day	All day	School closed to children
Monday 26 <sup>th</sup> October- Friday 30 <sup>th</sup> October	Half term		School closed to children
31 <sup>st</sup> October 2020	Deadline for middle school applications	Noon	
November 2020			
Monday 2 <sup>nd</sup> November	School re-opens to pupils		
	Children are invited to bring money to school for poppies/other merchandise from Monday 2 <sup>nd</sup> November		Traditional poppy (adhesive) 50p Slap bands £1.50 Reflective poppies 50p Silicone wristband £1.00 Zip-pull 50p
Tuesday 3 <sup>rd</sup> November	Deadline for PTFA Christmas cards to be returned to school.		More info to follow from PTFA
4 <sup>th</sup> November	Gosforth Voices (online)	3:45-4:30pm	Please register via link in Newsletter 3
Friday 6 <sup>th</sup> November	Flu sniff vaccines administered in school		More info to follow
8 <sup>th</sup> -16 <sup>th</sup> November	Operation Christmas Child boxes can be dropped off at school		
Monday 9 <sup>th</sup> – Friday 13 <sup>th</sup> November	Anti-bullying Week		
	National Maths Week		
Wednesday 11 <sup>th</sup> November	Remembrance Worship (all classes)		Children are invited to bring money to school for poppies/other merchandise from Monday 2 <sup>nd</sup> November
11 <sup>th</sup> November	Gosforth Band (online)	3:45-4:30pm	Please register via link in Newsletter 3
Friday 13 <sup>th</sup> November	Children in Need		Children invited to wear something spotty for a suggested donation of £1
	World Kindness Day		
Monday 16 <sup>th</sup> November	Diwali activities in school		
19 <sup>th</sup> November	PTFA AGM (remote)	8:15-9:00pm	More info to follow from PTFA
Monday 16 <sup>th</sup> – Friday 20 <sup>th</sup> November	Anti-bullying Week		Activities in school
18 <sup>th</sup> November	Gosforth Voices (online)	3:45-4:30pm	Please register via link in Newsletter 3
Thursday 24 <sup>th</sup> November	Governing Body Meeting	5:30pm	

25 <sup>th</sup> November	Gosforth Band (online)	3:45-4:30pm	Please register via link in Newsletter 3
Friday 27 <sup>th</sup> November	Advent Worship in school	9:15am	Children only
<b>December 2020</b>			
2 <sup>nd</sup> December	Gosforth Voices (online)	3:45-4:30pm	Please register via link in Newsletter 3
2 <sup>nd</sup> - 16 <sup>th</sup> December	PTFA Sponsored walk/ride/scoot to the North Pole		More info to follow from PTFA
Friday 4 <sup>th</sup> December	Children invited to wear Christmas jumpers to school (rest of uniform as normal)		No donations required
9 <sup>th</sup> December	Gosforth Band (online)	3:45-4:30pm	Please register via link in Newsletter 3
Friday 11 <sup>th</sup> December	Save the Children Christmas Jumper Day (rest of uniform as normal)		Children invited to wear Christmas jumpers for a suggested donation of £1
16 <sup>th</sup> December	Gosforth Voices & Gosforth Band Party	3:45-4:30pm	Please register via link in Newsletter 3
Friday 18 <sup>th</sup> December	Children invited to wear Christmas jumpers to school (rest of uniform as normal)		No donations required
	School closes for Christmas holidays	3:20pm	
21 <sup>st</sup> Dec - 1 <sup>st</sup> January 2021	Christmas holidays		School closed to children
<b>January 2021</b>			
Monday 4 <sup>th</sup> January	School re-opens to children	8:40am	
15 <sup>th</sup> January 2021	Deadline for Reception applications for September 2021	noon	
<b>February 2021</b>			
15 -19 <sup>th</sup> February	Half Term		School closed to children
<b>March 2021</b>			
<b>April 2021</b>			
2-16 <sup>th</sup> April	Easter holidays		School closed to children
Monday 19 <sup>th</sup> April	Staff Training Day		School closed to children
Wednesday 21 <sup>st</sup> - Thursday 22 <sup>nd</sup> April 2021	Y4 Residential		
<b>May 2021</b>			
Monday 3 <sup>rd</sup> May	Bank holiday		
<b>June 2021</b>			
31 <sup>st</sup> May - 4 <sup>th</sup> June	Half term		
<b>July 2021</b>			
Friday 23 <sup>rd</sup> July	School closes for summer		

**“Love to learn, learn to love”**