



November 2020

Newsletter 8 – 6.11.20

PTFA UPDATES



“Break a rule day” was a huge success and raised £115.92 for the PTFA funds. This money will directly support the work of the school. Thank you to everyone who contributed!



Please see the attached invitation for all parents, carers and friends of our school to attend the virtual PTFA AGM next week. **Please email the PTFA directly for the link at archbishopruncieptfa@gmail.com** Please do attend if you are able to! Thank you.

SCHOOL NEWS

It has been a joy to be back in school this week! The children continue to make us so proud with how well they continue to adjust to routines and practices and how hard they are working! They have made astounding progress since September and we are thrilled with them!

Thank you to all of you too for remaining so positive and being so complimentary about the work of the school. We were so taken aback by all the unexpected gifts and cards before half term. Such kindness is really appreciated, especially at this time.

Although we know that it can be difficult as a parent with less face-to-face contact, we want to reassure you that, inside the school walls, the school is as vibrant and loving as ever! Please remember to check our Twitter feed to see what is happening!

Flu sniffs have taken place today and the team of nurses were very complimentary about the children's behaviour! Well done everyone!

COVID-19 UPDATES

It is worth recognising the unsettling impact of the Prime Minister's announcement last Saturday and the subsequent debate about whether schools should or should not close. ARFS will remain open unless we are specifically told otherwise.



I would like to take the opportunity to remind you all that the local picture is the one that we need to be most aware of as a school community. The North East is the only area where the curve of infections is flattening. Newcastle systems have been used as an example of how to “flatten the curve” by a Cabinet Office team which visited the city on the Friday before half term. The resulting report highlighted Newcastle as best practice.

Please remember to report pupil absence via ParentMail if your child will not be in school before 9:00am so Mrs Pygall does not need to make calls to parents of absent pupils. Thank you. Other enquiries, such as about children's learning, should be directed to class teachers please.

Please could we politely request that children do not bring any toys or Pokémon cards (or similar) to school. We are really trying to reduce the number of items that travel between home and school at the moment. Thank you.

DROP OFF TIMES

A reminder that we are currently operating a staggered drop off system so that children in different bubbles do not mix. We would be grateful if your child entered the building, via their allocated door, at the correct time please in order to avoid unnecessary close contact with children in other year groups. Thank you for your support in this matter.

UPDATED GUIDANCE FOR SCHOOLS

The Government have now published guidance for schools regarding the national restrictions that began yesterday. Generally speaking, for us there is very little that needs to change from the measures implemented previously.



In the guidance, the Government emphasises that the vast majority of children should continue to be in school, as the risk to them of becoming very unwell from coronavirus (COVID-19) is very low, even for those with existing health conditions.

Clinically extremely vulnerable children

The guidance states: "most children originally identified as clinically extremely vulnerable no longer need to follow original shielding advice. Parents should be advised to speak to their child's GP or specialist clinician if they have not already done so, to understand whether their child should still be classed as clinically extremely vulnerable." Please inform us of this as soon as possible if this is the case. Children who live with someone who is clinically extremely vulnerable, but who are not clinically extremely vulnerable themselves, should still attend school. The guidance is similar for staff so we may require some colleagues to work from home during this period.

Transport

The Government is advising that travel in or out of local areas should be avoided, and parents, carers and staff should look to reduce the number of journeys they make, whilst travelling to deliver and access education is still permitted. Staff, children and their parents and carers are encouraged to walk or cycle when travelling to and from school where this is possible, and to plan ahead and avoid busy times and routes on public transport.

After-school clubs and activities

These can only continue if their primary purpose is childcare. We would like to reassure you that we intend to continue running both Breakfast Club and After School Club during the new restrictions. We believe that it is important that parents are still able to access childcare activities to enable parents to work.

Other childcare arrangements

Parents remain able to form a childcare bubble with another household for the purposes of informal childcare for children under 13 and support bubbles are still permitted for single adult households.



STAFFING

We are delighted to welcome two new temporary support staff to school this week to further enhance safe COVID-19 practices in school. We are very grateful that we have been able to do this in order to keep each class as a separate bubble that

does not mix with others as far as possible. Miss Fitzgerald will support Year 4, Monday - Friday. Mrs Thackray will support in EYFS on a Tuesday and Wednesday.

HOME LEARNING

We were delighted to see such positive feedback, via ParentMail, from families that have accessed Tapestry. In summary:



- 89% of parents felt that Tapestry was a “good” platform for home learning.
- No parents felt there was not enough work for their child and the overwhelming majority felt the amount of work was “about right”.
- Of the families that submitted work on Tapestry, all felt that feedback from staff was good.



We would remind the small number of families who felt there was too much work that we only ask you to do what you can within your own family circumstances.

EYFS EARLY ADOPTERS

We are really excited that we have been accepted as an “early adopter” of the new Early Years Foundation Stage (EYFS) curriculum which will be statutory in all schools for Nursery and Reception, from September 2021. By adopting the curriculum early, staff will have time to work with the new documentation and begin to implement changes over the course of the year. This means our children will have the best start to their EYFS journey and the school will be at the forefront of changes in education, in line with the most up to date research and expectations for Early Years.

The EYFS is guided by a framework called ‘Development Matters’ that sets out the learning, development and assessment requirements for all children until the end of their Reception year. All Early Years



practitioners are required to pursue daily rich activities to support each child’s educational development across seven areas of learning. This guidance has been reviewed and the goals for the end of Reception year have been updated. The reforms to the curriculum bring some exciting changes, which we are all keen to embrace and implement into our practice.

For further information you can find the detailed ‘EYFS early adopter framework- Development Matters’ document by clicking the link below:

https://assets.publishing.service.gov.uk/government/uploads/system/uploads/attachment_data/file/914443/Development_Matters_-_Non-statutory_curriculum_guidance_for_the_early_years_foundation_stage__1_.pdf

In the final term of the Reception year, a profile will be completed for Reception children. This provides parents and carers, practitioners and teachers with a well-rounded picture of a child’s knowledge, understanding and abilities, their attainment against expected levels, and their readiness for Year 1. Throughout their year in Reception, the children will be observed and assessed through their play and learning in order to gain insights and make reasonable judgements against the early learning goals. We will use the terms ‘emerging’ or ‘expected’ to describe end of year judgements, under the new guidance the term ‘exceeding’ has been removed.

If you have any questions, please do not hesitate to contact the EYFS team via their staff email.



FEEDING FAMILIES

Feeding Families are a charity that provide food hampers at Christmas to families in need. You can find out more information on the website at <https://feedingfamilies.org.uk/>

You can access the application form by following the link below.

<https://docs.google.com/forms/d/e/1FAIpQLSfJANYcxup00uPrNjPAAtjVG6Col4rk24jLYvoIbNT3cr-Enyw/viewform>

Families who are able to can also register to donate and deliver a hamper to another family.

CHARITABLE GIVING

Each class has a very small stock of poppy appeal merchandise remaining. This can be purchased each morning until stocks run out. Suggested donations are as follows:

- Traditional poppy (adhesive) 50p
- Slap bands £1.50
- Reflective poppies 50p
- Silicone wristband £1.00
- Zip-pull 50p



A reminder that Friday 13th November is Children in Need. We will be asking for £1 donations, **via ParentMail** please (rather than cash). Thank you.

CHURCH LINKS

Please see the attached flier from Gosforth, St Nicholas' about Christmas trails that are planned. It would be great for us all to get involved!

ALL STARS BIBLE CLUB

Our lunchtime Bible Club, run by a small team of parents, is not currently able to take place in school. However, our fantastic club leaders are hoping to send out Bible story videos, crafts, songs etc as they did last term to the parents of any children who are interested in receiving these from us.



Please could interested parents email susan_abraham@hotmail.co.uk if their child is interested in receiving e-mails from All Stars Leaders (even if your child was already on last year's list). Thank you!

CHRISTMAS

We are currently trying to think of creative ways that we can celebrate Christmas with our children, within the restrictions of the current guidance. Obviously, we will not be able to have gatherings of groups of parents and carers on site but we would be interested to hear about other ideas that you may have to help us get into the festive spirit when the time arrives. Please email any suggestions to admin@archbishop.newcastle.sch.uk. Thank you!



NURSERY PLACES

We still have some places available in our Nursery Class for January 2021. If you would like to find out more information, please contact Mrs Francis. We would love to meet your little ones!

SAFEGUARDING

Mrs Massey and Mr Booth are our school's Designated Safeguarding Leaders. If you have concerns about a child, please contact one of us. If it is an emergency and a child is in immediate danger please call the police.

Members of the public can also report concerns to Children's Social Care directly. If you have a concern about a child please contact one of the following:

- **Initial Response Service** – 0191 277 2500
- **Northumbria Police** – 101 (in an emergency always dial 999)
- **NSPCC Helpline** – 0800 800 5000



There is also a secure online referral form available for you to explain your concern, if you are a member of the public. <https://nccportal.newcastle.gov.uk/forms/referral/public>

With my very best wishes as always,

Mrs KE Massey

Headteacher



The journey to Bethlehem in Gosforth

Celebrating Christmas 2020

(COVID secure of course!)

Over 2000 years ago, Bethlehem was in chaos...
no room left for the birth of Jesus
Join in the journey in Gosforth as it turns into Bethlehem to
help us all to celebrate Christmas

7 Trails to follow.....from 1 Dec – Christmas Eve. Maps and photos will be available on our Facebook page and website



1. The Roman Emperor Caesar Augustus
2. The innkeepers
3. The angels
4. The shepherds
5. The Wise men
6. Herod
7. The donkey

– a census , Mary and Joseph had to go to Bethlehem.
– Is there any room? No!
– sang Glory to God in the highest and peace to His people on earth.
– heard the angels song and rushed to Bethlehem
– wandered around following a star
– a King threatened by the news of the birth of Jesus
– not in the bible but part of the Christmas tradition

The trails commence on the evening of 1st Dec
1st Dec with one house window per trail revealed to begin the story.
2nd Dec there will be two windows on each trail,
3rd Dec there will be three windows on each trail
and so it continues until Christmas Eve.....until there are 24 windows on each trail.
The church lights will be lit each evening as a beacon of hope for us all.



Carols

On Sunday 20 Dec and on Christmas Eve 2pm – 4pm, as you wander along the trails, carols will be played from sound systems in houses with an open window, or families and friends will be on doorsteps singing familiar carols..... you will be met by innkeepers, angels, shepherds and wise men who will tell you about the chaos in Bethlehem and how Jesus the saviour of the world was born. They will give you a clue about where to find Jesus in a manger with Mary and Joseph taking care of Him..... follow the star. And, the innkeepers might have some mulled wine and roasted chestnuts to share

The four Sundays of Advent...
The Vicarage windows on Rectory Road will be decorated to depict the themes of Advent, revealing one on each Sunday of Advent



29 Nov The Candle of Hope The Patriarchs. We hear the message of hope told to Abraham
6 Dec The Candle of Peace The Prophets. We hear from Isaiah of one who will be born Prince of Peace
13 Dec The Candle of Love John the Baptist. John the Baptist spoke bravely that we should share what we have with others, treat each other kindly and show God's love
20 Dec The Candle of Joy Mary the Mother of Jesus, with Joy when she knew that she would become the mother of Jesus

Watch for details of carol services in the church and on Zoom
Contact Rev'd Jane Natrass, Vicar of Gosforth Parish Church of St Nicholas, natrassjane@aol.com 07568530503





HM Government NHS

LOCAL COVID ALERT LEVEL

HIGH

Social Contact 1 household / bubble indoors. Rule of six outdoors.	Weddings and Funerals Up to 15 guests for weddings and up to 30 guests for funerals. 15 for exceptions, wakes and related ceremonies.	Overnight Stays Overnight stays permitted subject to social contact rules.	Working from home guidance Work from home where possible.
Shopping and Retail Open.	Leisure and gyms Open.	Hospitality Open with some restrictions including 10pm closing time and table service only.	Entertainment and tourist attractions Open, except nightclubs and adult entertainment.
Education Schools, FE colleges open. Universities must reflect wider restrictions.	Healthcare Services Open.	Residential Care Closed to external visitors other than in exceptional circumstances.	Travel and Transport May continue to travel to open venues, but reduce number of journeys where possible. Avoid travel into Local COVID Alert Level Very High areas where possible.
Sporting Activity Organised sport / leisure physical activity allowed in outdoor settings. Indoor organised sport must follow social contact rules (other than youth or disabled sport).	Worship Open, subject to social contact rules.	Childcare Registered and supervised childcare. Supervised activities permitted in private homes. Children's groups permitted. Childcare bubbles for under 14s.	Youth Clubs and Activities Permitted.

There are three simple actions we must all do to keep on protecting each other:

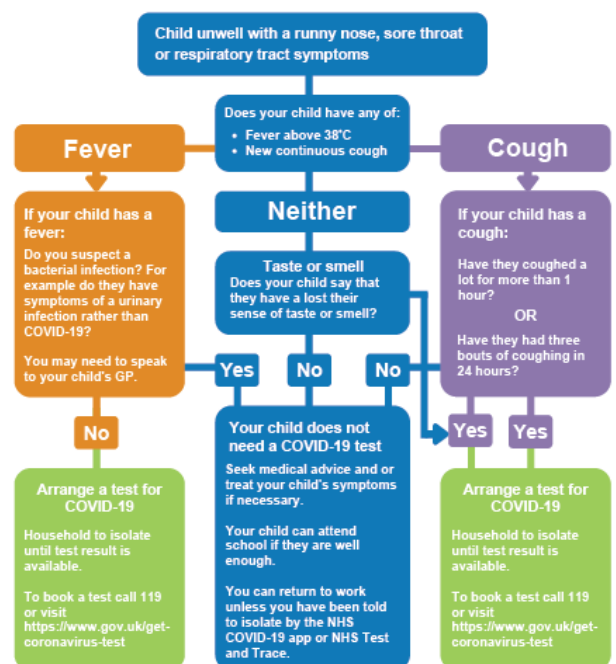
- Wash hands** keep washing your hands regularly
- Cover face** wear a face covering in enclosed spaces
- Make space** stay at least 2 metres apart - or 1 metre with a face covering or other precautions

For more information and detailed guidance visit:
[gov.uk/coronavirus](https://www.gov.uk/coronavirus)

Newcastle City Council

COVID-19 guidance for families with children

This flowchart should be used as guidance only by families with children. If you suspect your child has COVID-19 please arrange a test.



For more information on COVID-19 visit www.newcastle.gov.uk/coronavirus



“Love to learn, learn to love”

Please note that all activities in school are for children and staff only at this time.

November 2020			
8 th -16 th November	Operation Christmas Child boxes can be dropped off at school		
Monday 9 th – Friday 13 th November	National Maths Week		
Wednesday 11 th November	Remote Remembrance Worship (all classes)		Children are invited to bring money to school for poppies/other merchandise from Monday 2 nd November
11 th November	Gosforth Band (online)	3:45-4:30pm	Please register via link in Newsletter 3
Friday 13 th November	Children in Need		Children invited to wear something spotty for a suggested donation of £1 via ParentMail please
	World Kindness Day		
Monday 16 th November	Diwali activities in school		
19 th November	PTFA AGM (remote)	8:15-9:00pm	More info to follow from PTFA
Monday 16 th – Friday 20 th November	Anti-bullying Week		Activities in school
18 th November	Gosforth Voices (online)	3:45-4:30pm	Please register via link in Newsletter 3
Thursday 24 th November	Governing Body Meeting	5:30pm	
25 th November	Gosforth Band (online)	3:45-4:30pm	Please register via link in Newsletter 3
Friday 27 th November	Advent Worship in school	9:15am	Children only
December 2020			
2 nd December	Gosforth Voices (online)	3:45-4:30pm	Please register via link in Newsletter 3
2 nd - 16 th December	PTFA Sponsored walk/ride/scoot to the North Pole		More info to follow from PTFA
Friday 4 th December	Children invited to wear Christmas jumpers to school (rest of uniform as normal)		No donations required
9 th December	Gosforth Band (online)	3:45-4:30pm	Please register via link in Newsletter 3
Friday 11 th December	Save the Children Christmas Jumper Day (rest of uniform as normal)		Children invited to wear Christmas jumpers for a suggested donation of £1
16 th December	Gosforth Voices & Gosforth Band Party	3:45-4:30pm	Please register via link in Newsletter 3
Friday 18 th December	Children invited to wear Christmas		No donations required

	jumper to school (rest of uniform as normal)		
	School closes for Christmas holidays	3:20pm	
21 st Dec - 1 st January 2021	Christmas holidays		School closed to children
January 2021			
Monday 4 th January	School re-opens to children	8:40am	
15 th January 2021	Deadline for Reception applications for September 2021	noon	
February 2021			
15 -19 th February	Half Term		School closed to children
March 2021			
April 2021			
2-16 th April	Easter holidays		School closed to children
Monday 19 th April	Staff Training Day		School closed to children
Wednesday 21 st - Thursday 22 nd April 2021	Y4 Residential		
May 2021			
Monday 3 rd May	Bank holiday		
June 2021			
31 st May - 4 th June	Half term		
July 2021			
Friday 23 rd July	School closes for summer		

“Love to learn, learn to love”